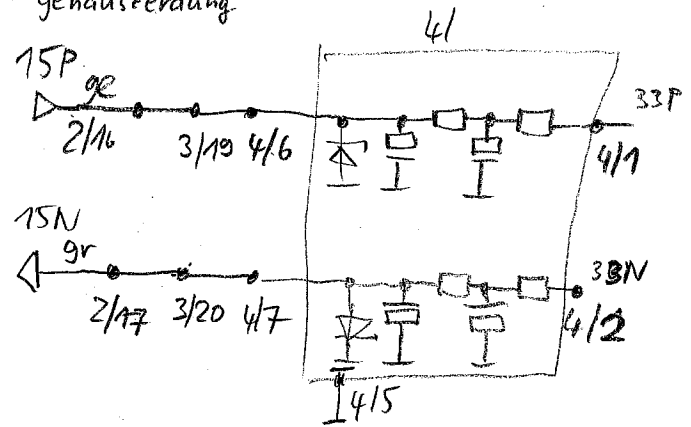
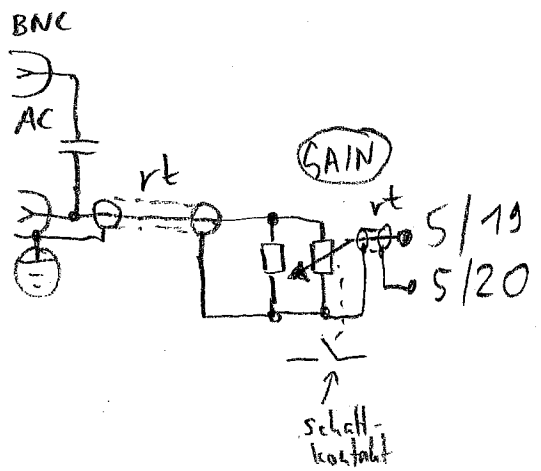
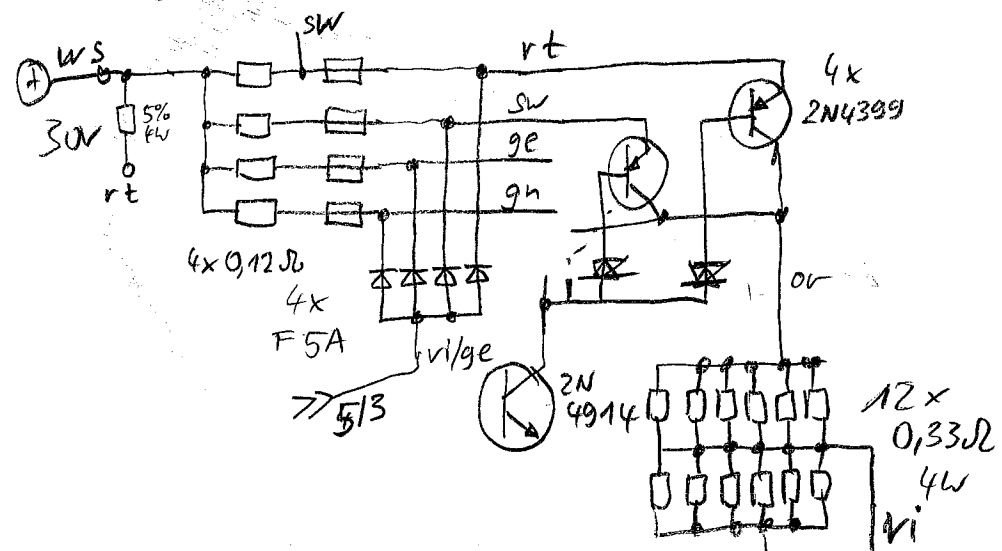


- = Masse der Endstufe (bzgl. ±30V)
- = Masse der Tauchspule (bzgl. ±33V)
- = Gehäuseerdung

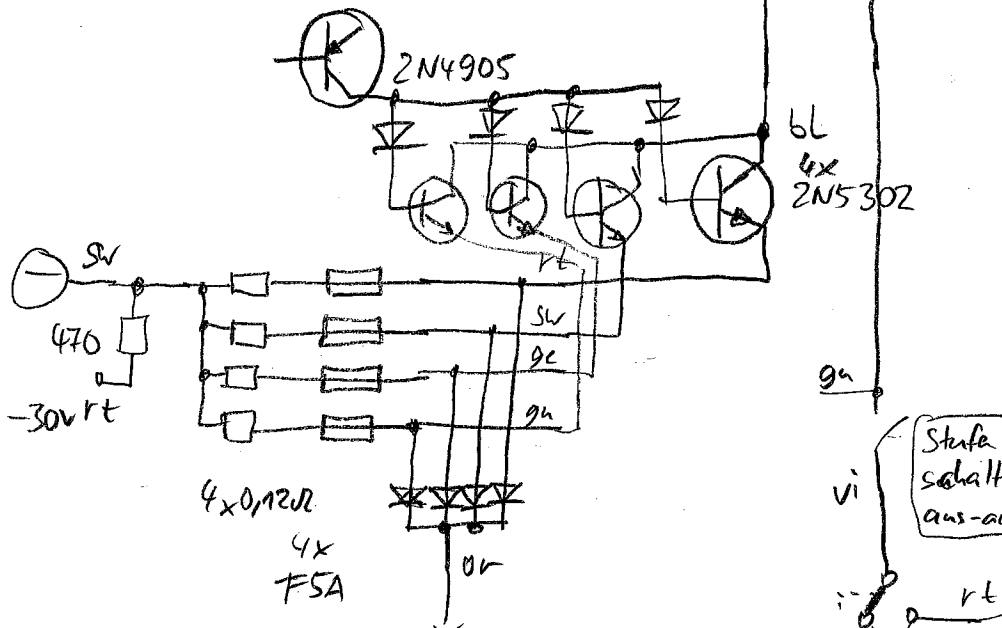




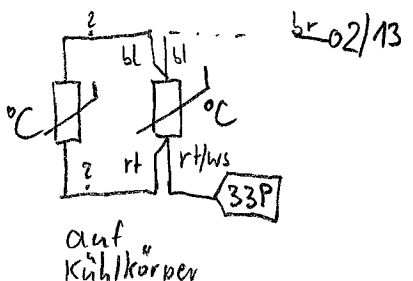
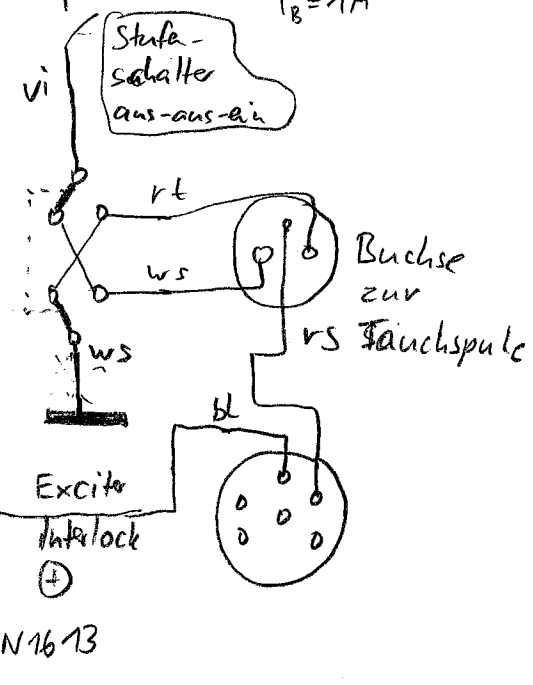
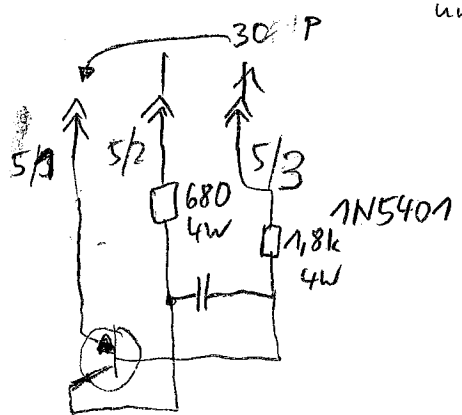
Endstufe

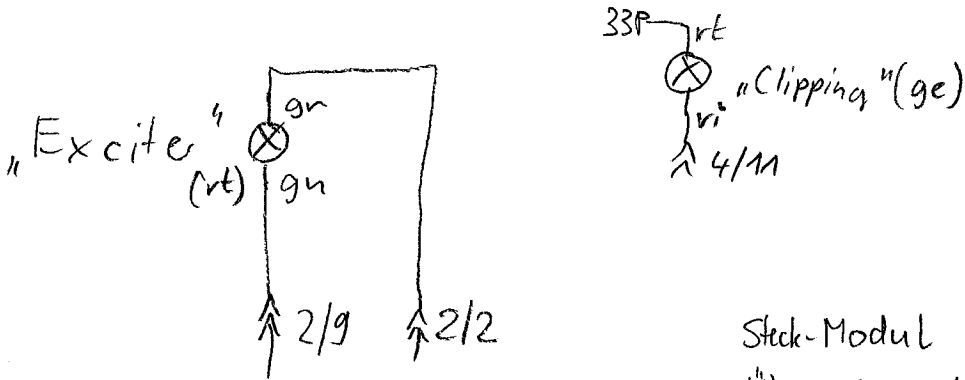


- 2N5302
npn 30A 60V 200W
 - 2N4915
nph 5A 80V 87W
 - 2N4399
pnp 30A 60V 200W
 - 2N4906
pnp 5A 80V 87W
 - 2N4914
nph 5A 60V 87W
 - 2N4905
pnp 5A 60V 87W
- $I_B = 1A$



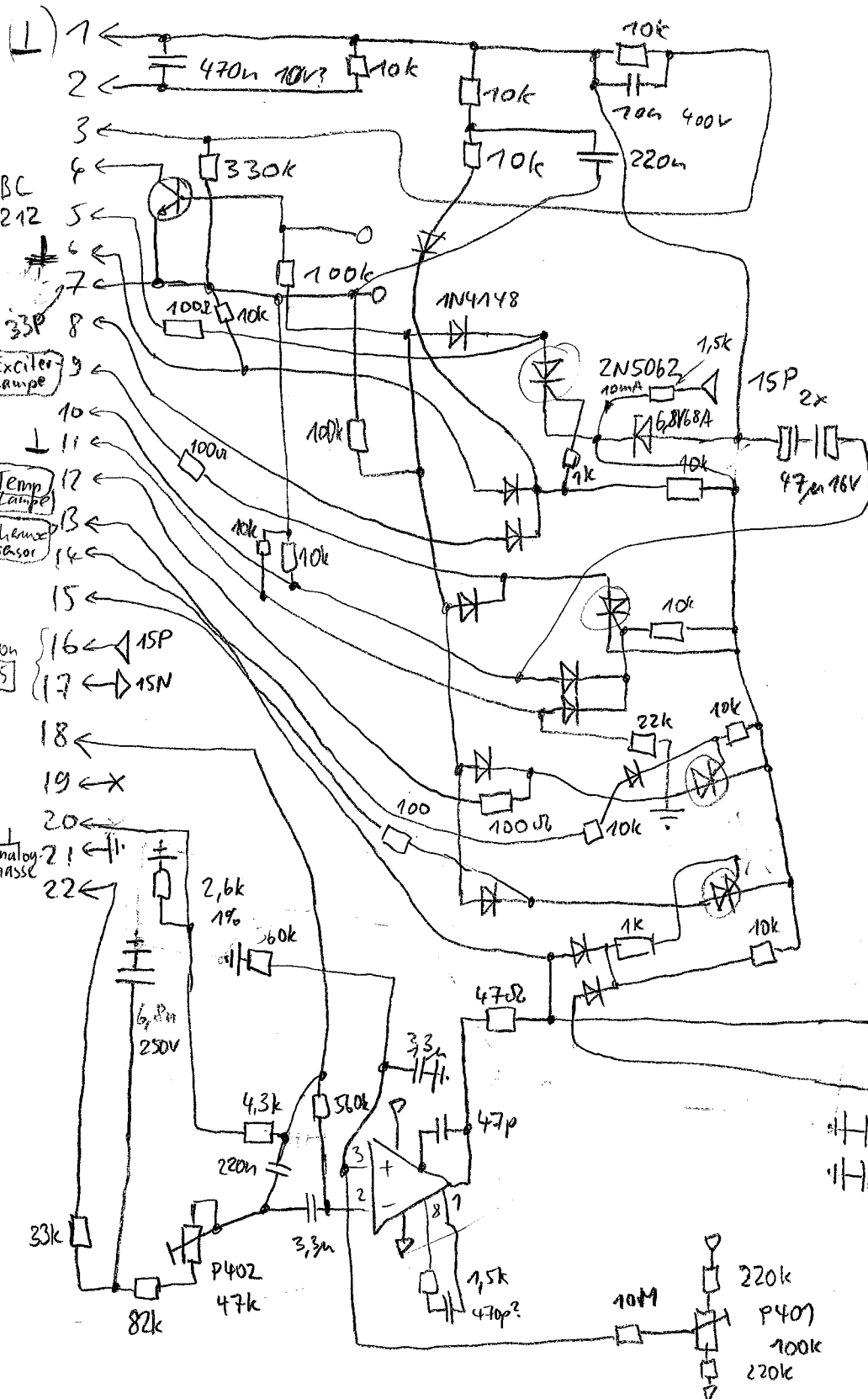
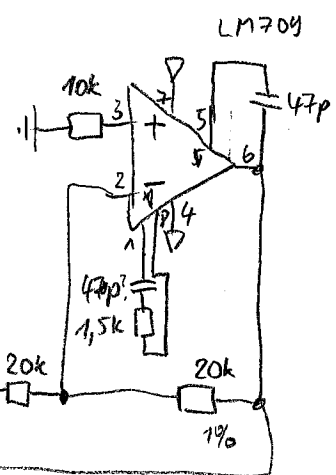
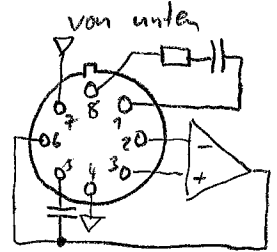
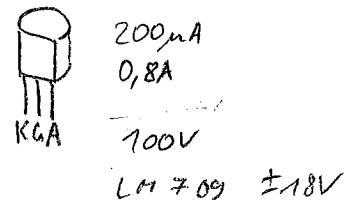
zur Lampe
"Transistor"
und 5/2





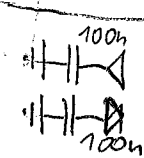
Steck-Modul $\boxed{2}$ = XC 0822, ZH10063
 Überwachungs-/Schutzschaltung

2N5062

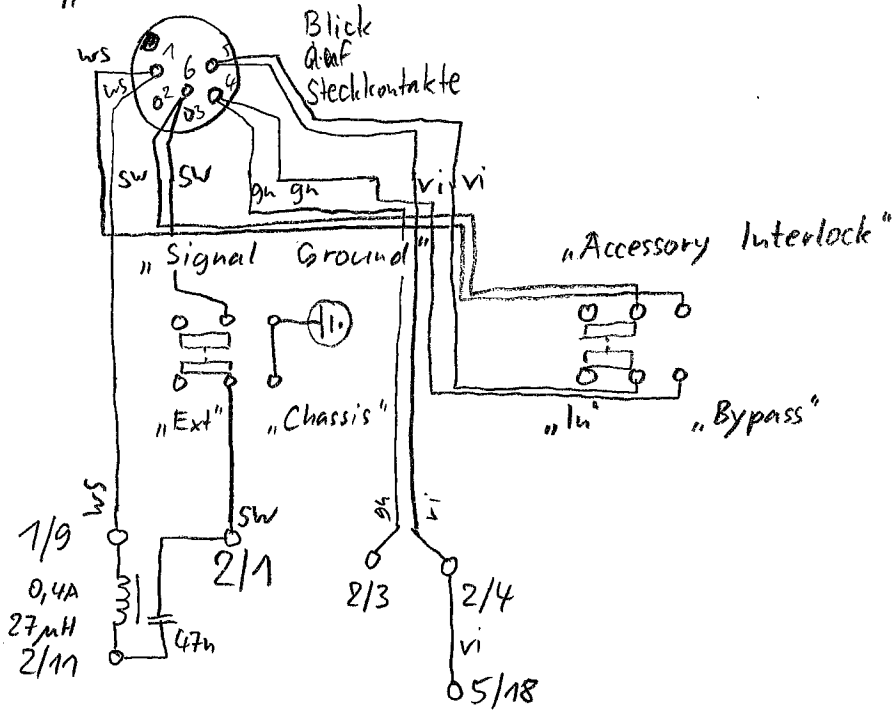


- 1 ←
- 2 ←
- 3 ←
- 4 ←
- 5 ←
- 6 ←
- 7 ←
- 8 ←
- 9 ←
- 10 ←
- 11 ←
- 12 ←
- 13 ←
- 14 ←
- 15 ←
- 16 ← 15P
- 17 ← 15N
- 18 ←
- 19 ← x
- 20 ←
- 21 ←
- 22 ←

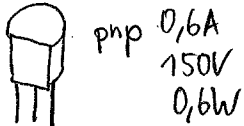
BC 212
 33P
 Exciter-Lampe
 Temp-Lampe
 Umräum-Sensor
 von S
 Analog-masse



"Accessory"



2N 5401



pnp 0,6A
150V
0,6W

EBK

BC 212 B



pnp 0,1A
50V
1W

BC 99003



v.u.

2N 5248



n-Kanal FET
4 mA
30V
58V

J174 (T8824)



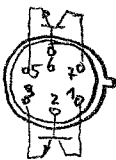
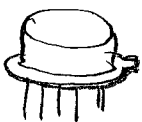
(T8842)
p-Kanal-Schalter selbstleitend
(S und D tauschbar)
30V 50mA 85dB
4,5V

U 232 (H8818)



n-Kanal-JFET

MD 8002 (90m)



Doppeltransistor
npn 30mA
50V
0,6W

BYW 56 ? PH

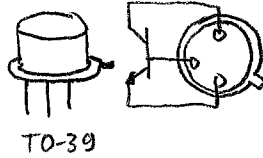


1000V
2A



AAZ Glasstransparent

BF 258



npn
250V
0,1A
5W

B&K Type 2707

BC 177B



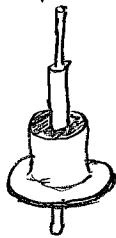
pnp
45V
100mA

BC 107B



npn
45V
100mA

1N 91



Germanium diode
100V
150 mA
0,22V $\approx U_F$

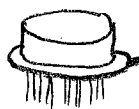
2N 4919 \rightarrow pnp

2N 4922 \rightarrow npn

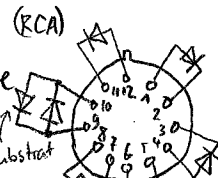


3A
60V
30W

EKB
CA 3039



12 Beine
Substrat

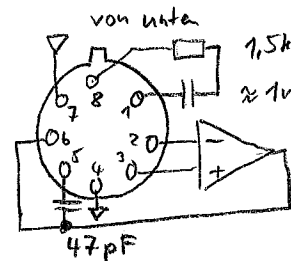


Diodenarray
5V
25 mA
 $\Delta U_F \leq 5 mV$
1 ns

LM 709



8 Beine
 $\pm 18V$
2,6 mA



von unten

1,5k Ω
 $\approx 1nF$

2N5062



0,8A
100V
5 mA = 1 μ
200 μ A = 1T