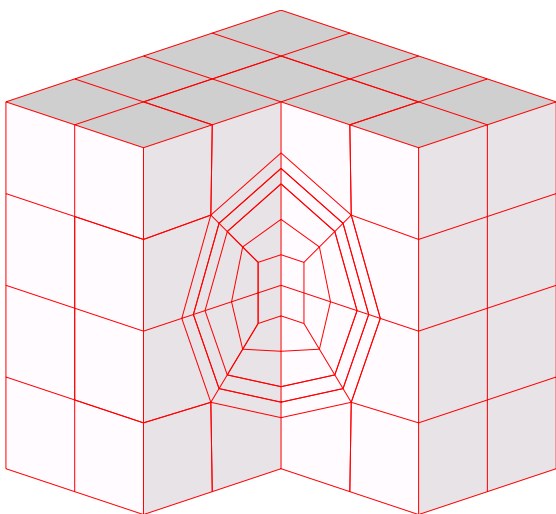
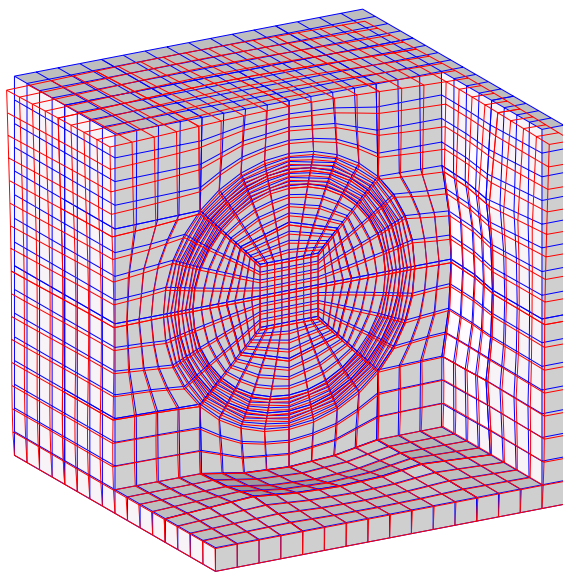


SFB 393 - TU Chemnitz



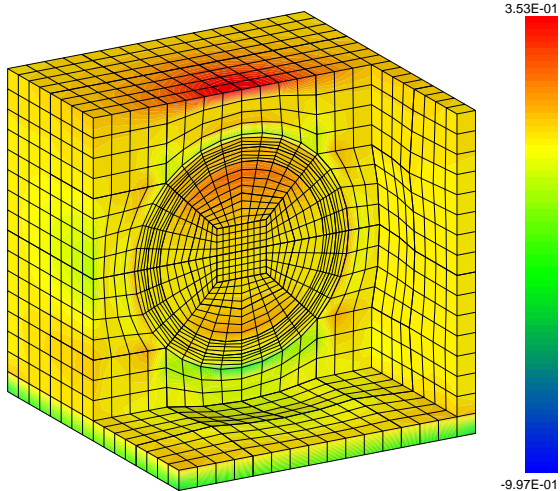
Chondrocyte - Startnetz: 229 Knoten, 160 Hexaeder

SFB 393 - TU Chemnitz



Chondrocyte - Level 2 - Mesh + (2x-)Deformation

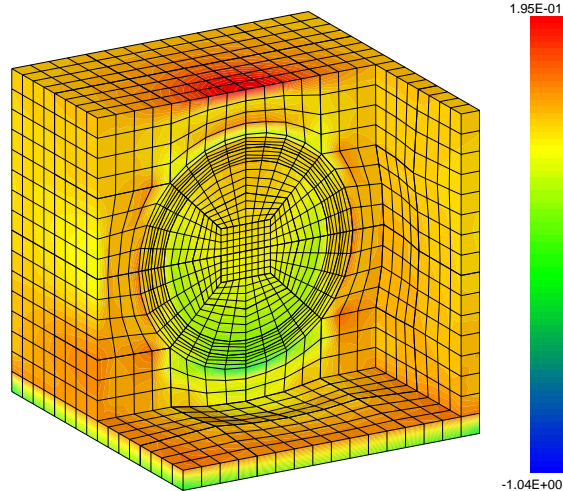
SFB 393 - TU Chemnitz



Chondrocyte - Level 2

sig\_11

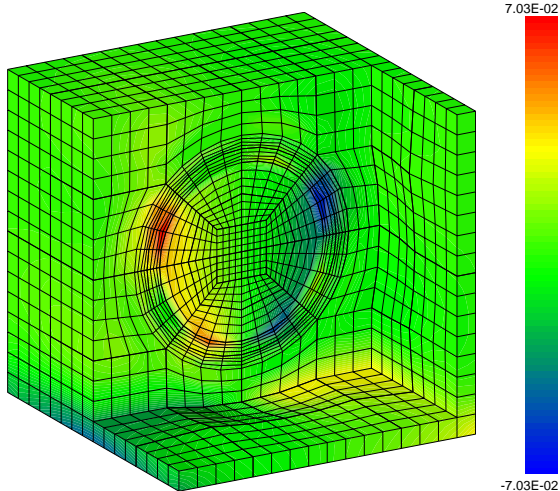
SFB 393 - TU Chemnitz



Chondrocyte - Level 2

sig\_33

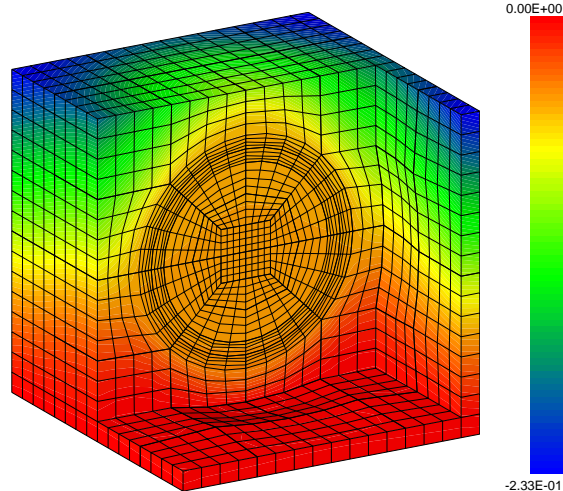
SFB 393 - TU Chemnitz



Chondrocyte - Level 2

sig\_23

SFB 393 - TU Chemnitz

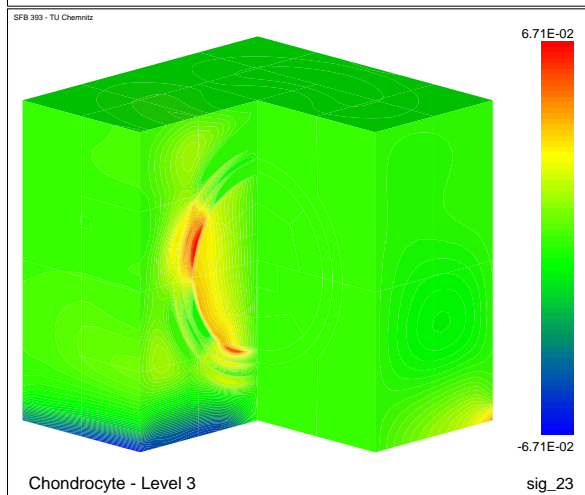
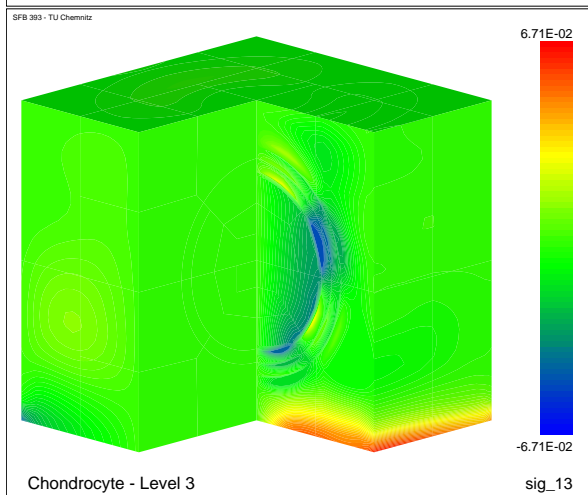
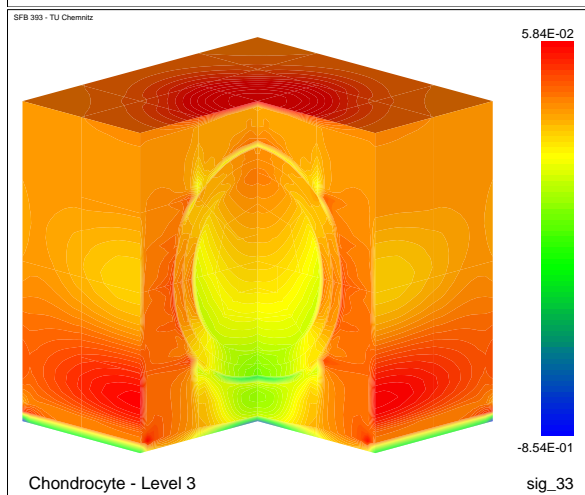
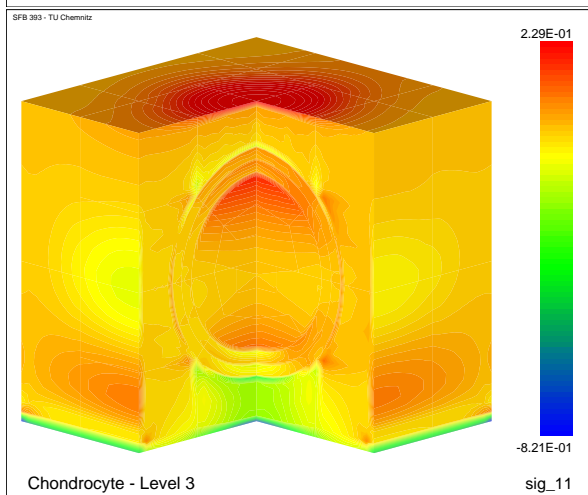
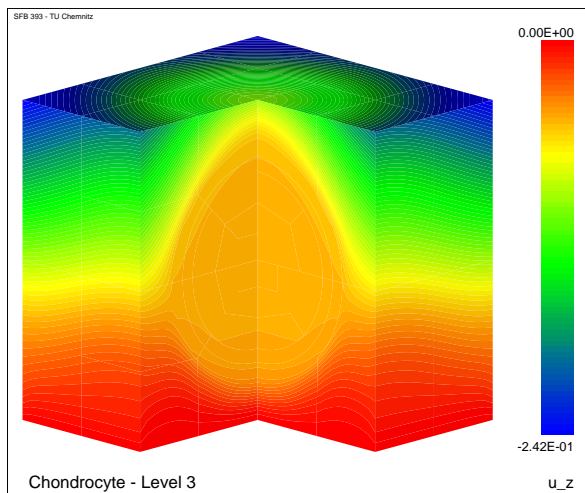
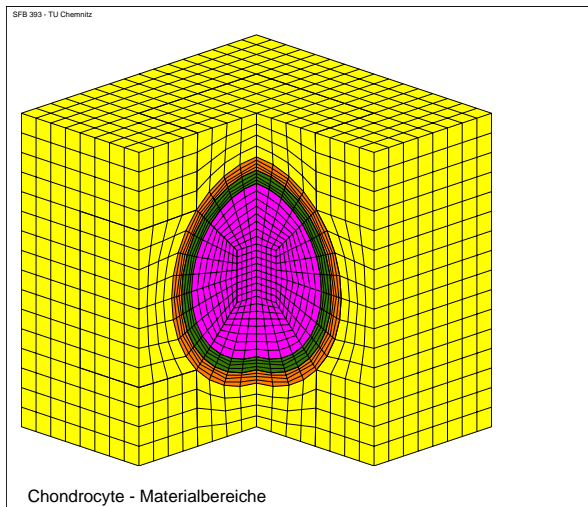


Chondrocyte - Level 2 - Vertical Displacement

u\_z

Kantenlänge: 12, Belastung vertikal: -0.1  
 Materialparameter von innen nach außen:

$E$	4	40	80	400
$\nu$	0.49	0.40	0.35	0.30



Parall. Rechnung auf 32 Proz.:	Level	Freiheitsgrade	Iter.	Zeit	Kommunik.
	2	33 267	130	4 s	86 %
	3	255 459	153	15 s	70 %
	4	2 003 907	170	68 s	40 %
auf 64 (54) Prozessoren:	4	2 003 907	170	55 s	56 %
	5	15 878 019	186	302 s	30 %